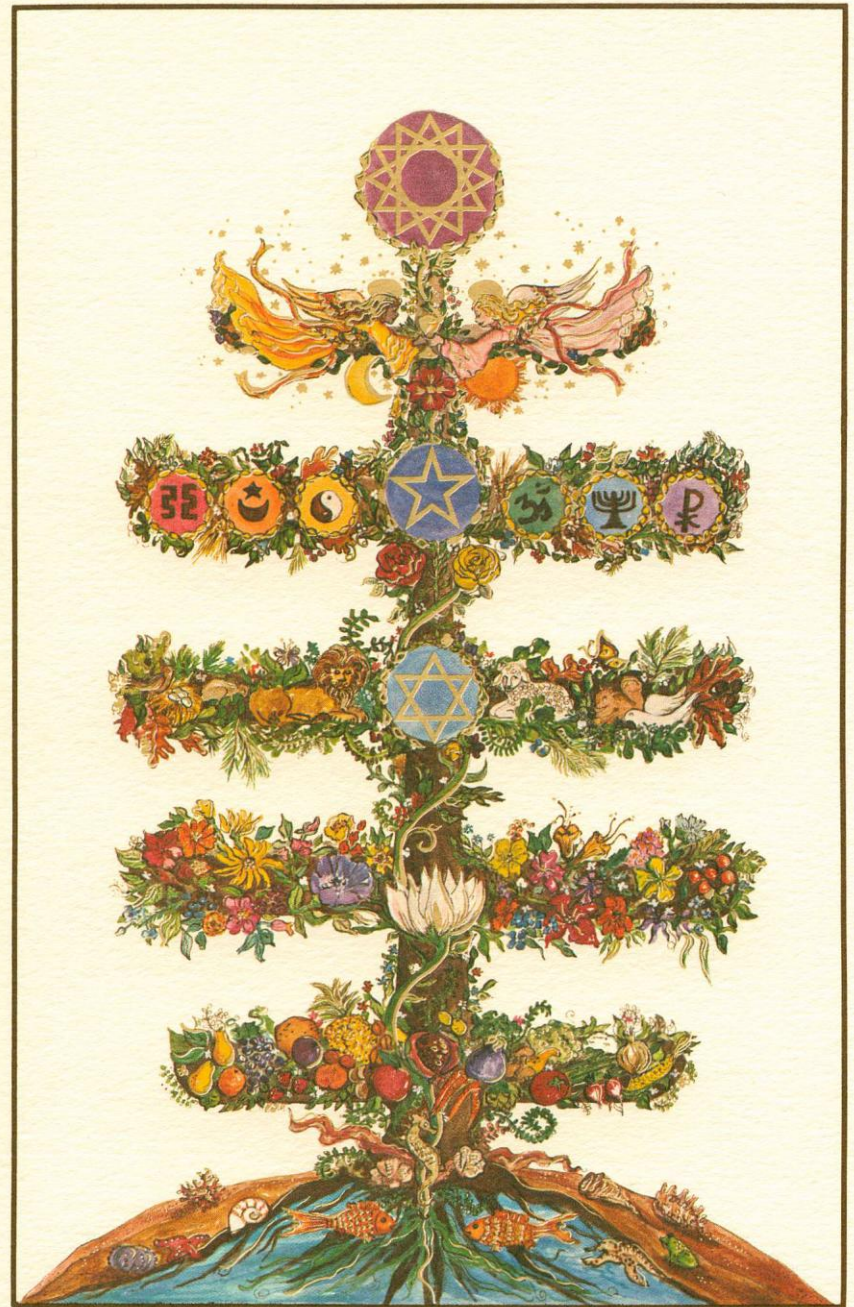


*In the beginning God created
the Tree of Life; God created all that lives,
in the waters, in the air and on the land.*

*God also created human beings
to ascend the ladder of consciousness
that they might love
the whole creation and proclaim
One Earth, One Humanity, One Spirit.*

*© Creative Initiative Foundation 1979
Palo Alto, California*



THE TREE OF LIFE

*Deep in your dreams remember a garden green and fair
And at its very center an ancient tree stands there.
The Tree is tall and stately, it is growing even now
And all the life that ever was is cradeled in its bough.*

*There is a garden growing, it is such a lovely sight
And at its heart a mighty tree whose branches reach for light.
The light is from the love of God for all of life to share
But now it needs the love of man to keep it growing there.*

*The Tree of Life, it grows with love.
The Tree of Life, it grows with love.
The Tree of Life, it grows with love.*

*So you must love the garden and the life within its heart
And you must tend and guard the Tree of which we all are part.
Now all the world is waiting for the hope that you can bring, so
The Tree can keep on blooming in God's Eternal Spring.*

*The Tree of Life, it grows with love.
The Tree of Life, it grows with love.
The Tree of Life, it grows with love.*

*Now all the world is waiting for the hope that you can bring, so
The Tree can keep on blooming in God's Eternal Spring.*

*The Tree of Life, it grows with love.
The love of Man, the Grace of God.*

THE TREE OF LIFE

Original Sheet Music for
Piano

MUSIC

Kathy and Bill Burch

LYRICS

Betsy Scarborough

VOCAL SOLOIST

Kathy Burch

GUITAR & PIANO

Bill Burch

FLUTE

Rich Lohman

RECORDING

ENGINEER

Harn Soper

TREE OF LIFE VOCAL LEAD SHEET 1

♩ = 66

Chords: G, D, C, C/D, G, Bm, C, C/D, G, Em, D, C, G/B, Am, Dsus, D, G, Bm, C, C/D, G

Lyrics:

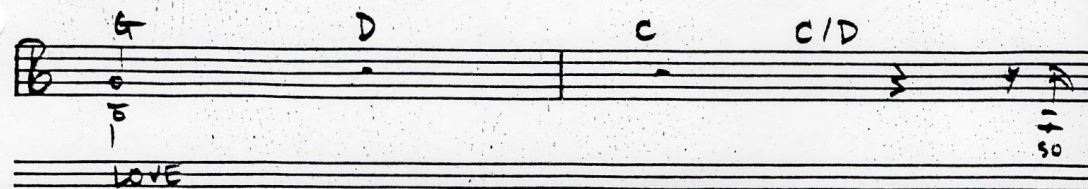
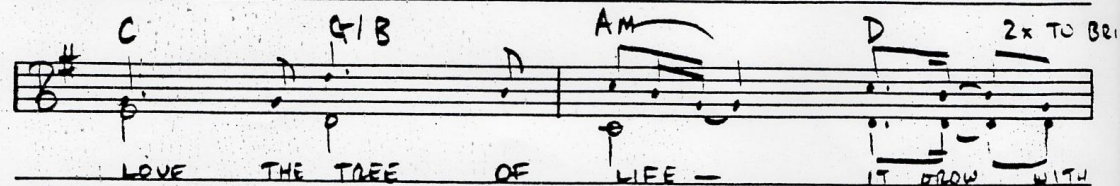
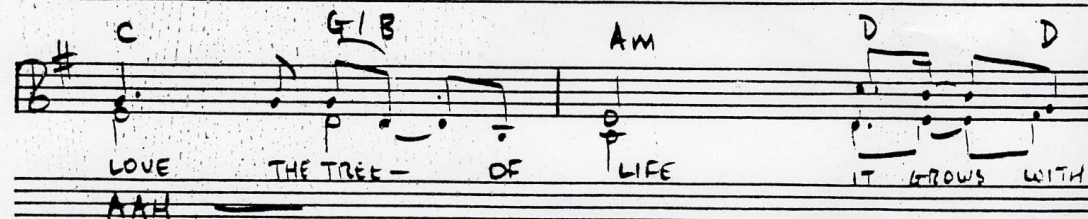
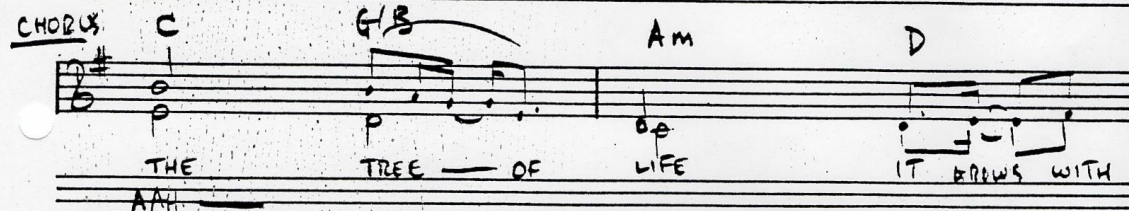
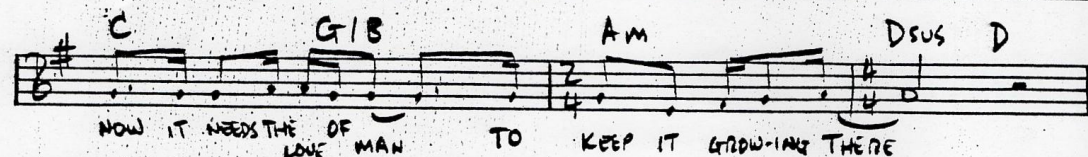
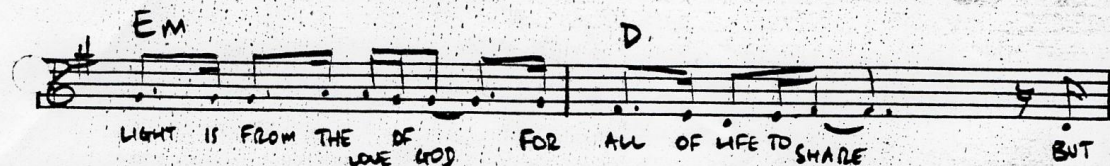
IN YOUR DREAMS RE-MEM-BER A GAR-DEN GREEN AND FAIR AND
AT ITS VE-RY GEN-TLE AN AN-CIENT TREE STANDS THERE
TREE THAT'S TALL AND STATE-LY IT IS GROW-ING EVEN NOW
ALL THE LIFE THAT EVER WAS IS CRA-DLED IN ITS BOUGHS THERE
IS A GAR-DEN GROW-ING IT IS SUCH A LOVE-LY SIGHT AND
AT ITS HEART A MIGHTY TREE WHOSE BRANCHES REACH FOR LIGHT THE

- 12 -

MUSIC PAPERS 12441 Riverside Drive
BOSTON, MASS. 02116

TREE OF LIFE VOCAL

2



G Bm

YOU MUST LOVE THE GAR-DEN AND THE LIFE WITH-IN ITS HEART AND

C C/D G

YOU MUST TEND AND GUARD THE TREE OF WHICH WE ALL ARE PART NOW

Em D

ALL THE WORLD IS WAIT-ING FOR THE HOPE THAT YOU CAN BRING SO THE

C G/B Am TO CHORUS

TREE CAN KEEP ON BLOOM-ING IN GOD'S E-TER-NAL SPRING

BRIDGE G F Eb Bb

NOW ALL THE WORLD IS WAIT-ING FOR THE

Fsus F Bb Eb Bb

HOPE THAT YOU CAN BRING SO THE TREE CAN KEEP ON BLOOM-ING IN

T.O.F LIFE
VOCAL

4

Handwritten musical score for "T.O.F LIFE VOCAL". The score is written on five systems of staves, each with a treble clef and a key signature of one flat (Bb). The lyrics are written below the staves, and the chords are written above the staves.

System 1: Chords: Cm, Eb, Fsus, F. Lyrics: GO ——— DS E — TER — NA SPRING

System 2: Chords: Eb, Bb/D, Cm, F. Lyrics: THE TREE — OF LIFE IT GROWS WITH
AAH ———

System 3: Chords: Eb, Bb/D, Cm, F. Lyrics: LOVE THE TREE — OF LIFE IT GROWS WITH
AAH ———

System 4: Chords: Eb, Bb/D, Cm, F. Lyrics: LOVE THE TREE OF LIFE IT GROWS WITH
AAH

System 5: Chords: Bb, Ab, Eb, Bb, FINE. Lyrics: LOVE

* NOTE: IN CHORUSES, ON "IT GROWS WITH..."

Handwritten musical score for the piano accompaniment. The score is written on two systems of staves, each with a treble clef and a key signature of one flat (Bb). The lyrics are written below the staves, and the chords are written above the staves.

System 1: Chords: Bb, Ab. Lyrics: LOVE

System 2: Chords: Bb, Ab. Lyrics: LOVE

Handwritten notes: "PLAY IT LIKE THIS" with an arrow pointing to the piano part. "LIKE WISE IN Bb EXCEPT TRANSPOSED!"